

Picturing Your Locale

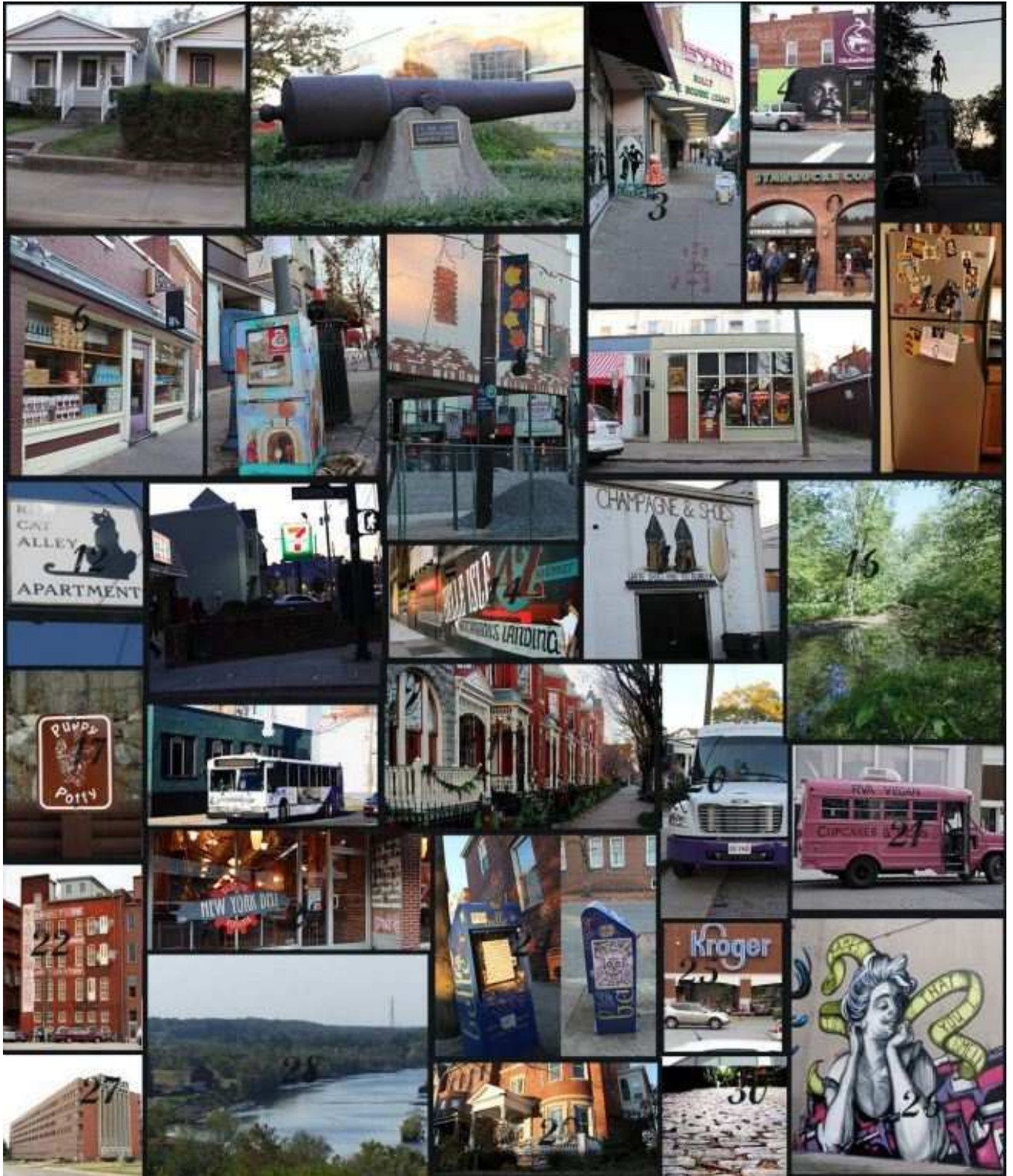
by Rachael Cohen

Picturing Your Locale is a participatory art project. Participants are asked to photographically respond to 30 prompts related to their local environment. In an effort to elicit personal and thoughtful responses, the prompts are purposefully vague. They are also designed to promote a range of images. Some of the images will be specifically local, some will be specifically personal, and still others will reflect mainstream visual culture. The aim of the project is to get people thinking about their local landscape.

What do you notice on a daily basis? What is more obscure? How do the visual stimuli we pick out affect our interpretation of the local culture?

Photographic responses will be presented in a uniform template. When presented together the viewer can directly compare prompt responses. What similarities arise? What things seem to be truly unique? Hopefully, the project will provide fodder for discussion about what local culture means in the context of a globally connected world.

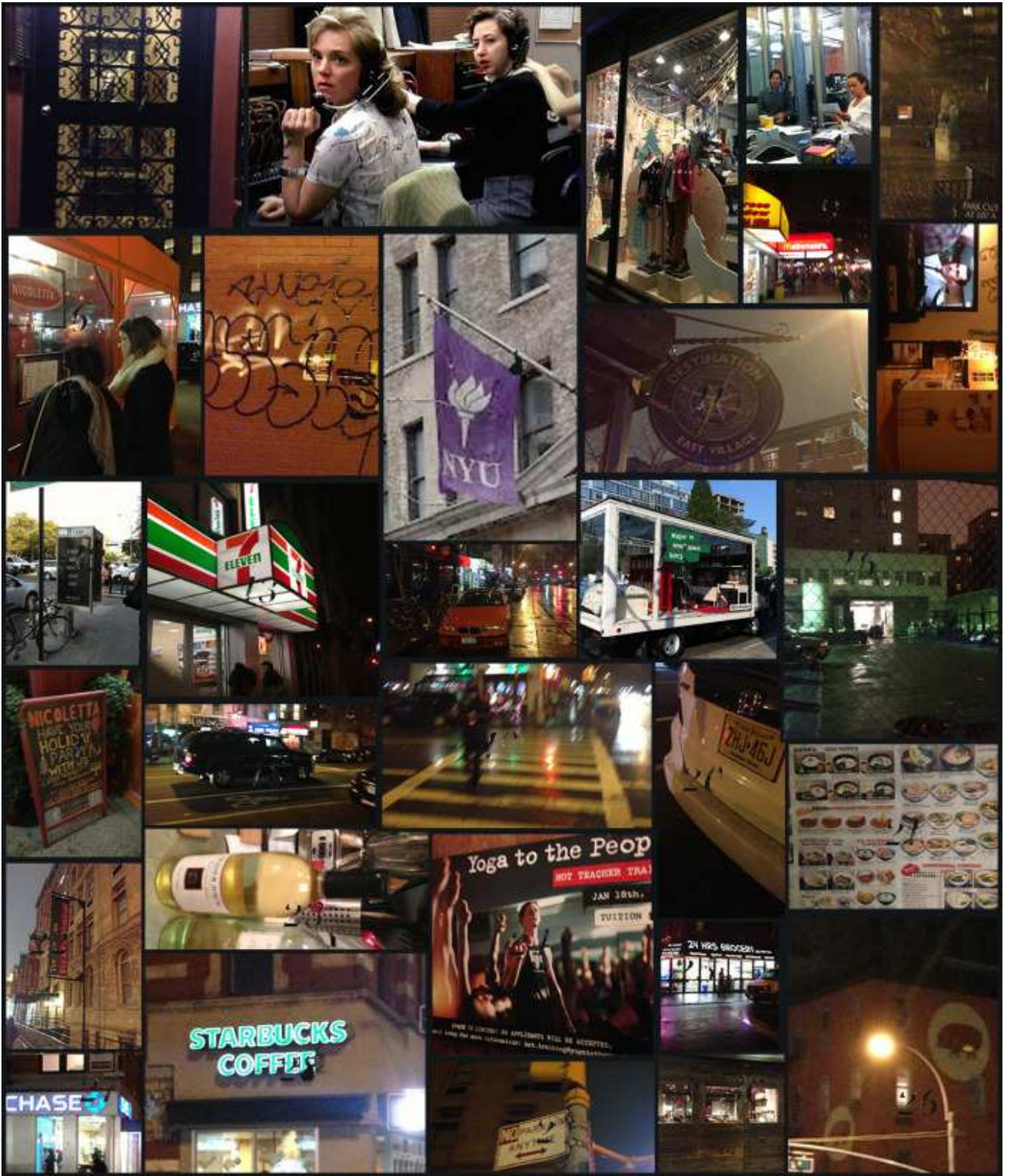
This project also doubles as a lesson. It can easily be transformed into an art scavenger hunt for a range of grade levels. Student could be given the prompts and a disposable camera. After the students complete the scavenger hunt and place their responses into the template, the class could discuss the similarities and differences of their responses. The class could investigate how different people view the same place differently. They could also look at how different people value different aspects of their local culture.



Richmond, VA



Boston, MA



New York, NY

Picturing Your Locale

Show us what it looks like in your community. Take or find a picture in response to each of the prompts. Arrange your photos using the "Picturing" template. Paste each photo into the numbered frame that corresponds to the prompt. When you finish, send the results back to Voke! (If a particular prompt does not apply to you, please write or otherwise demonstrate why within the corresponding frame).

- 1. Common architecture*
- 2. A relic of the past*
- 3. Your favorite spot in a commercial district*
- 4. A place you work*
- 5. Public sculpture*
- 6. A favorite restaurant*
- 7. Evidence of local artists*
- 8. Local flags or banners*
- 9. A chain restaurant or cafe*
- 10. A peek inside your home*
- 11. A store only found in your location*
- 12. Housing signage or advertisement*
- 13. Convenience store*
- 14. A revitalizing neighborhood*
- 15. Wacky, weird, or wild*
- 16. A place without buildings*
- 17. Regional signage*
- 18. Transportation*
- 19. The neighborhood you live in*
- 20. A license plate*
- 21. Fun food options*
- 22. A repurposed building*
- 23. Juxtaposition of old and new*
- 24. Event or message posts*
- 25. Where you get your groceries*
- 26. Favorite mural*
- 27. Industrial, business, or financial anchor*
- 28. A place you go to think*
- 29. Local politics*
- 30. Historic architecture or building materials*

